



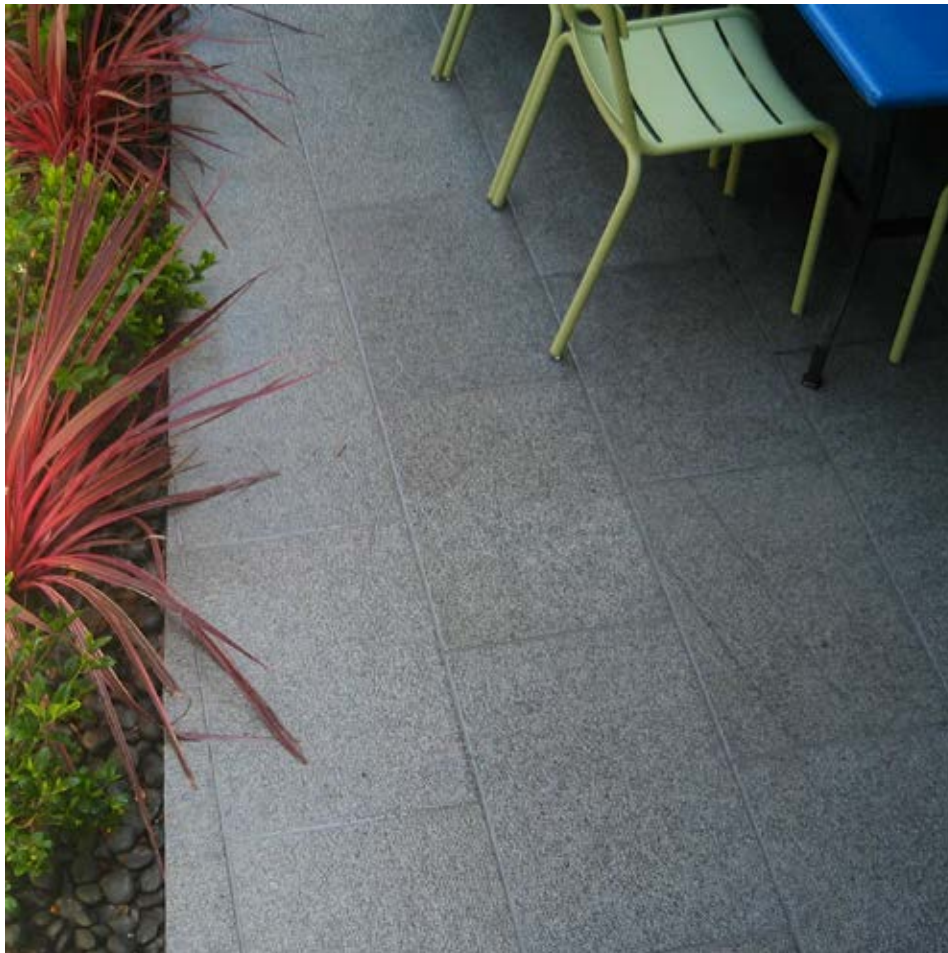
## HERON'S EGG GRANITE

Heron's Egg Granite captures the best of the geological past and inspires fresh concepts for the future. In this stone, shimmering mica and feldspar glisten, beckoning a closer look, while quartz, saturated with deep grays, blankets the surface with a calm richness. The result is one of the most visually stunning materials in our collection. Its appearance is enhanced by our hand finishes, which batter and dampen the surface, creating clean

white crystals that contrast the flickering minerals to great effect.

Often used as a split face wall surface or as a paver, the hand-tooled finishes on Heron's Egg Granite will highlight lintels, sills and copings. Honing the surface darkens it even further and produces dramatic slab work.

As with many of our materials, large-scale formats are available by special order.



### RECOMMENDED USES

PAVERS	CARVED OBJECTS
VENEER	COLUMNS
QUOINS	SINKS / TUBS
COPING / CAPS	SLAB
CURBS	COBBLESTONES
SILLS / LINTELS	DRAIN GRATES

### PROJECTS

Toorak Residence

### INSTALLATION

Heron's Egg Granite may be installed in all standard setting techniques: mortar or thinset on slab or by sand setting.



UNITED STATES OF AMERICA  
TEL +1 206 709 3000

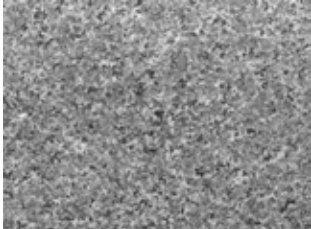
AUSTRALIA  
TEL +61 3 8199 9555

CHINA  
TEL +86 592 533 0273

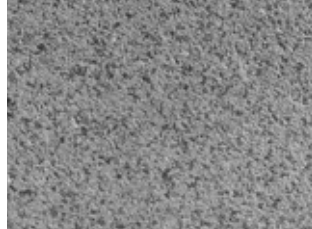
*rhodes-stone.com*  
*info@rhodes-stone.com*



## HERON'S EGG GRANITE



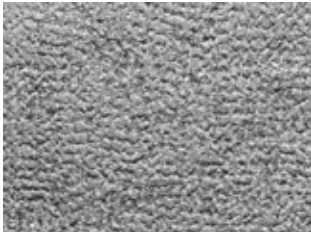
**HONED**  
 min thickness - 0.75" / 20 mm



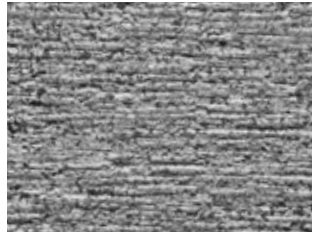
**SAND BLASTED**  
 min thickness - 0.75" / 20 mm



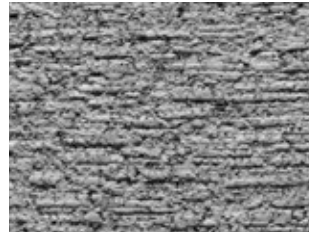
**FLAMED**  
 min thickness - 0.75" / 20 mm



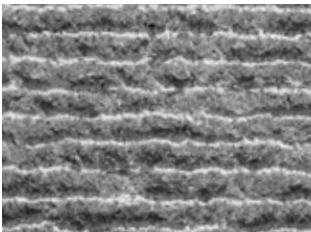
**BUSH HAMMER**  
 min thickness - 1.5" / 38 mm



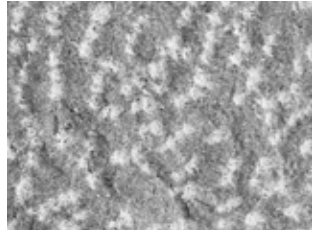
**FINE ADZE**  
 min thickness - 1" / 25 mm



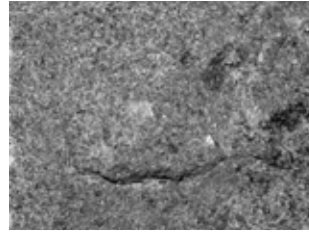
**COARSE ADZE**  
 min thickness - 2" / 50 mm



**2 POINT STALK**  
 min thickness - 2" / 50 mm



**PINEAPPLE**  
 min thickness - 3" / 75 mm



**SPLIT**  
 min thickness - 2.5" / 64 mm

### MATERIAL SPECIFICATIONS

STANDARD BLOCK : 54" x 36" x 16"  
 1350 x 900 x 400 mm

MAX SPECIAL BLOCK : 110" x 46" x 36"  
 2800 x 1200 x 900 mm

STANDARD VENEER :  
 3" x 3" to 16" x 26"; 3" thick  
 75 x 75 mm to 400 x 660 mm; 75 mm thick

STANDARD PAVERS :  
 12" x 12" to 24" x 30"; 1.25" - 3" thick  
 300 x 300 mm to 600 x 750 mm; 32 - 75 mm thick



### TECHNICAL DATA

ASTM	TEST	
C666	freeze thaw	0.084 %
C97	absorption	0.20 %
C97	bulk gravity	175.8 lbs/ft <sup>3</sup> 2,816 kg/m <sup>3</sup>
C99	mod. of rupture	2,700 psi 18.6 MPa
C170	compressive strength	14,181 psi 97.8 MPa
C880	flexural strength	2,200 psi 15.2 MPa

UNITED STATES OF AMERICA  
 TEL +1 206 709 3000

AUSTRALIA  
 TEL +61 3 8199 9555

CHINA  
 TEL +86 592 533 0273

*rhodes-stone.com*  
*info@rhodes-stone.com*